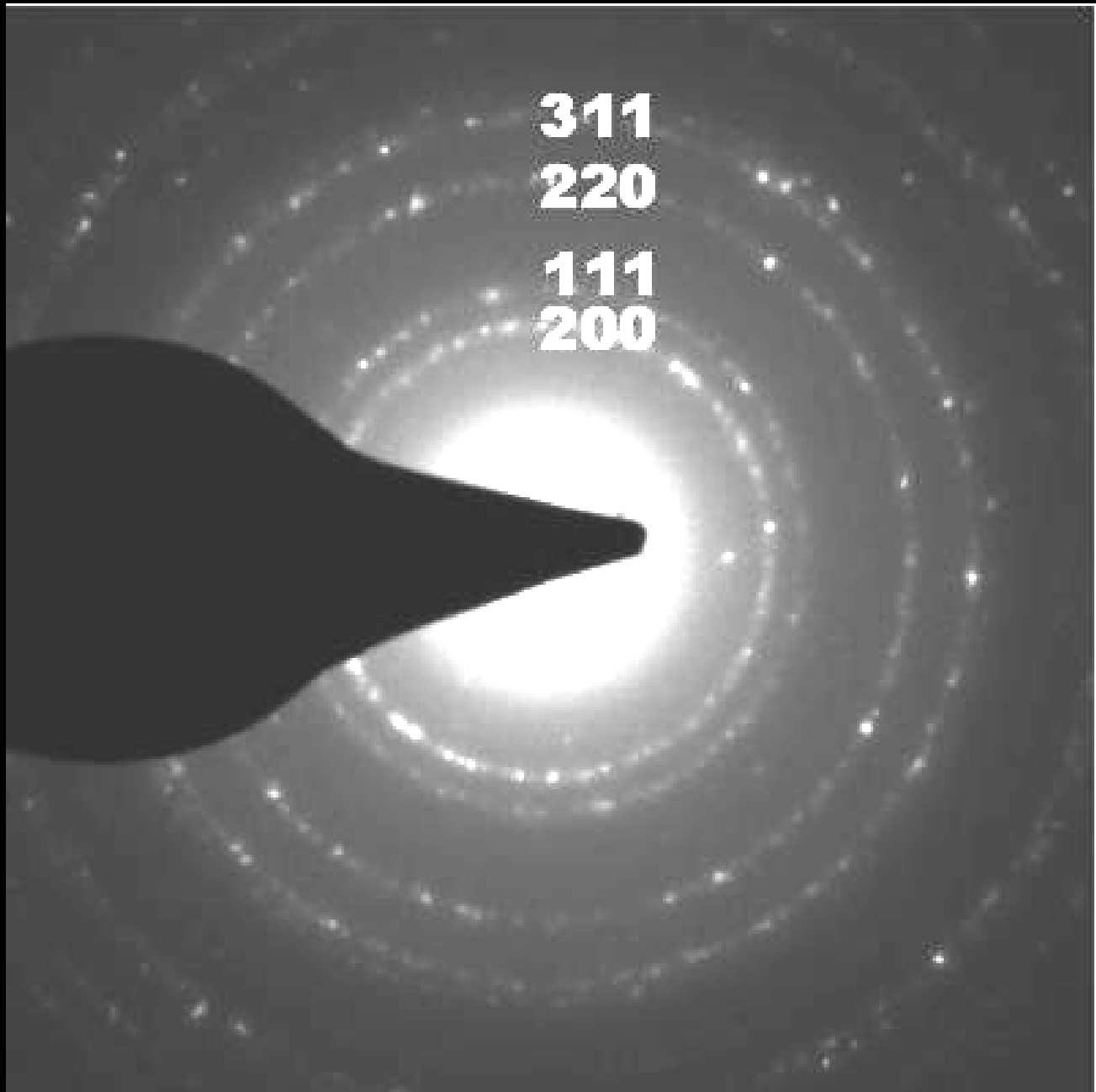
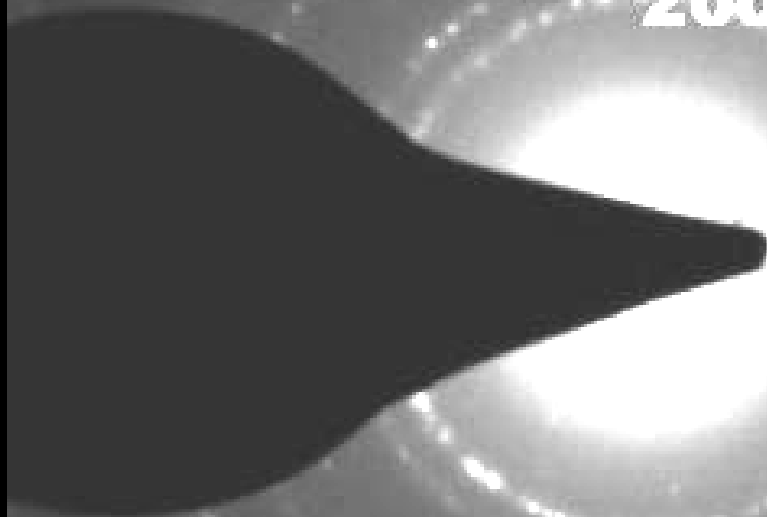


311

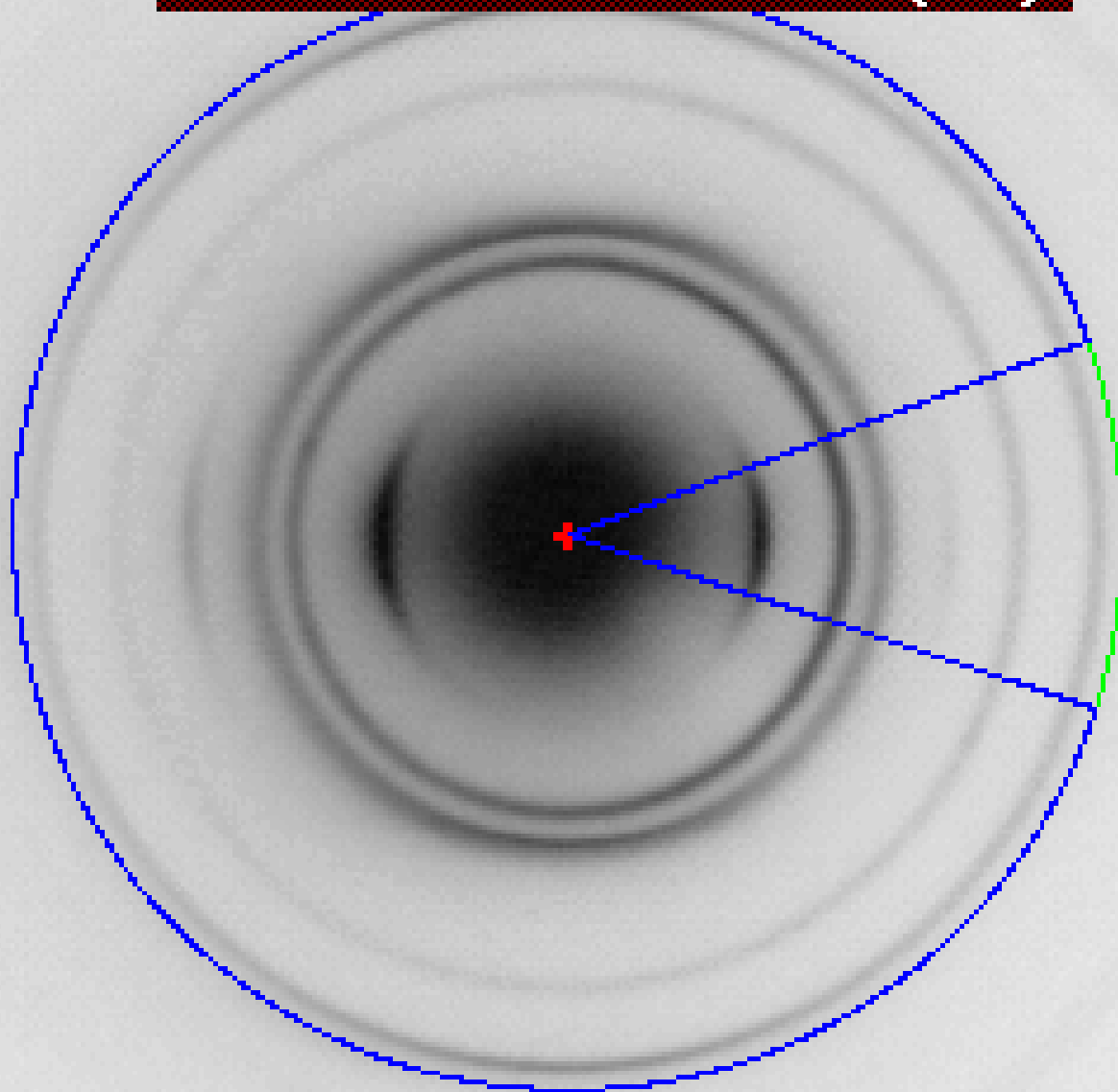
220

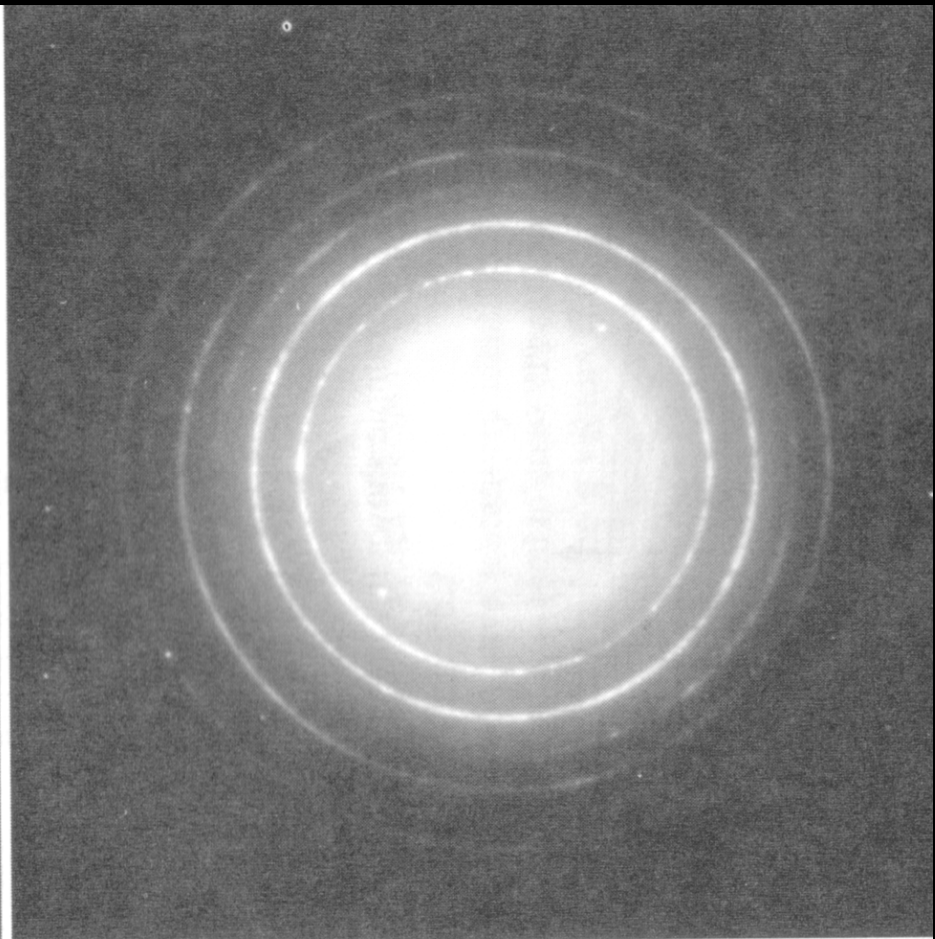
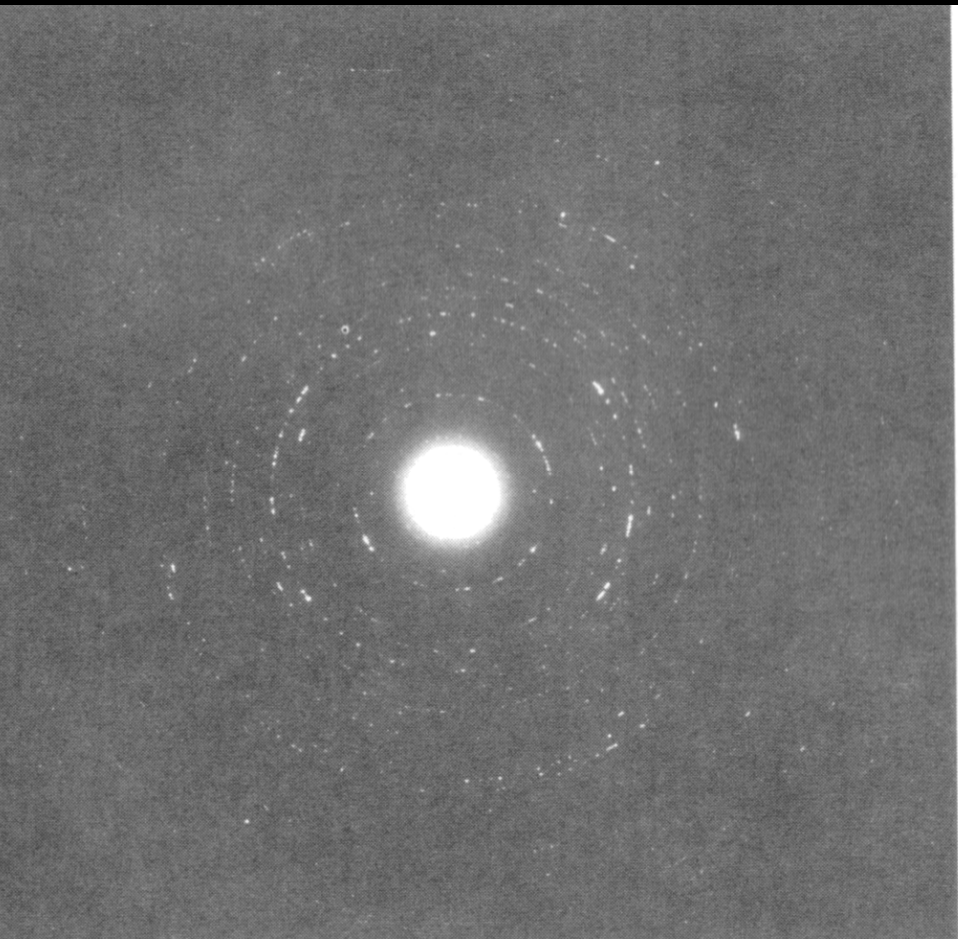
111

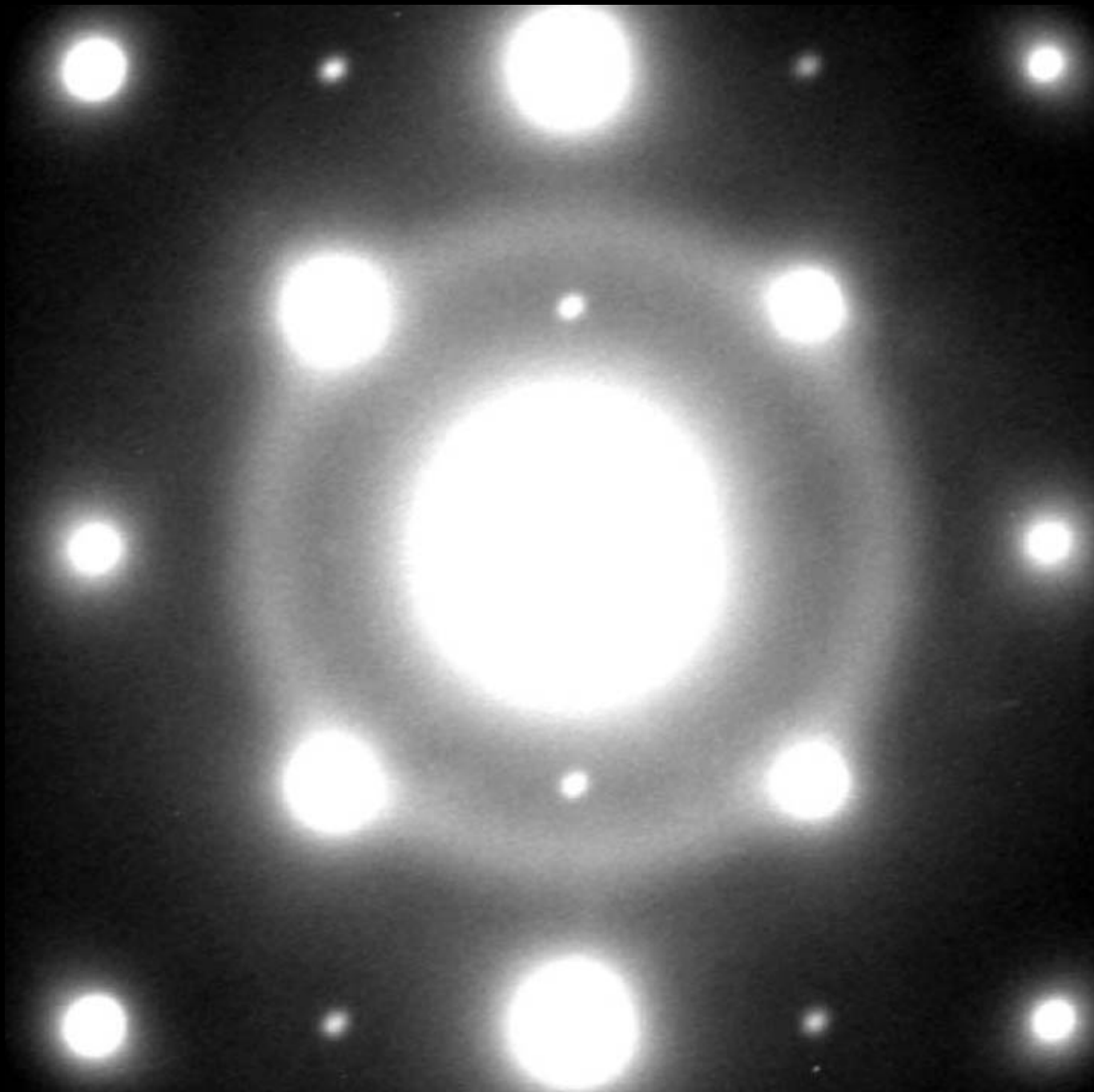
200



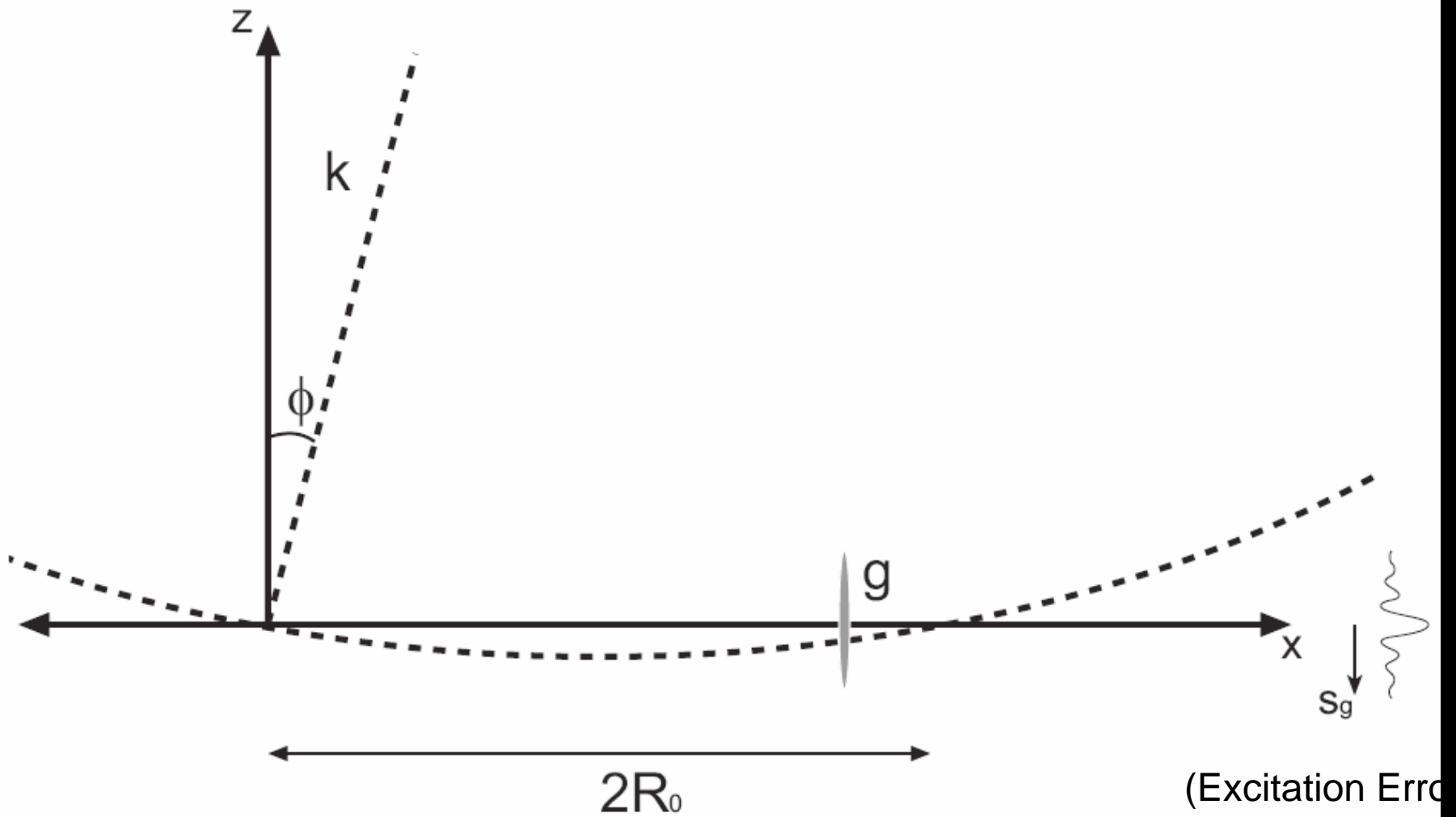
735AC.TIF - 640x488x8 (2:1)



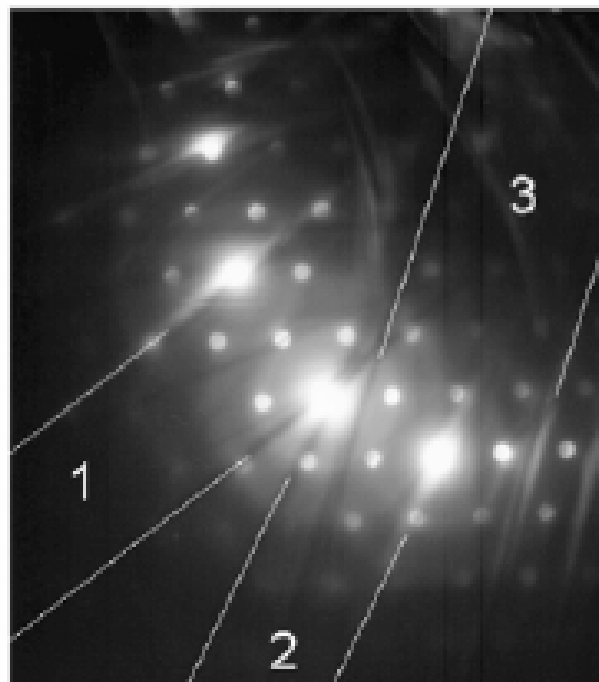
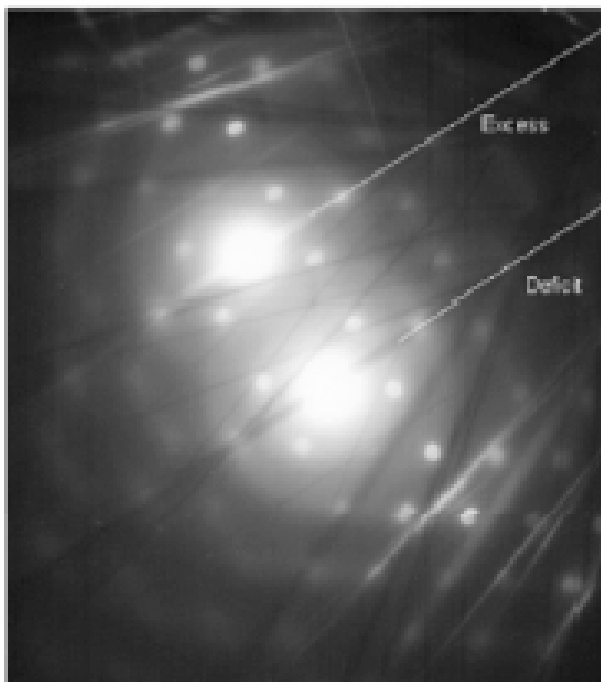
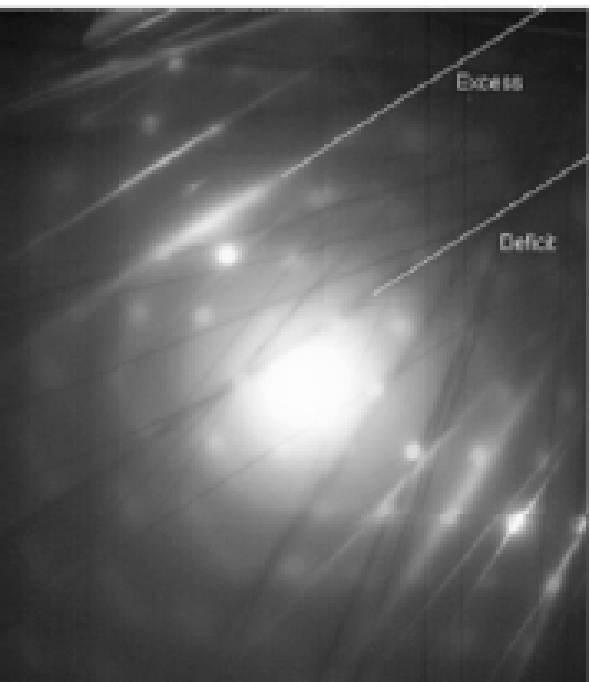
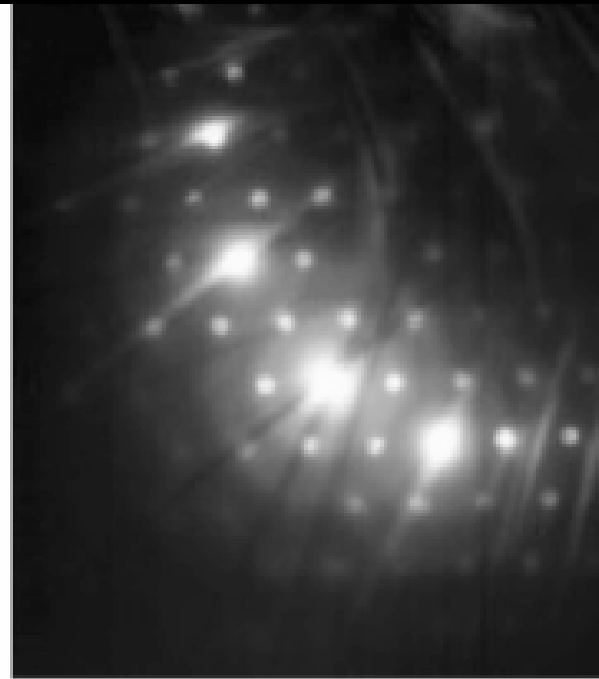
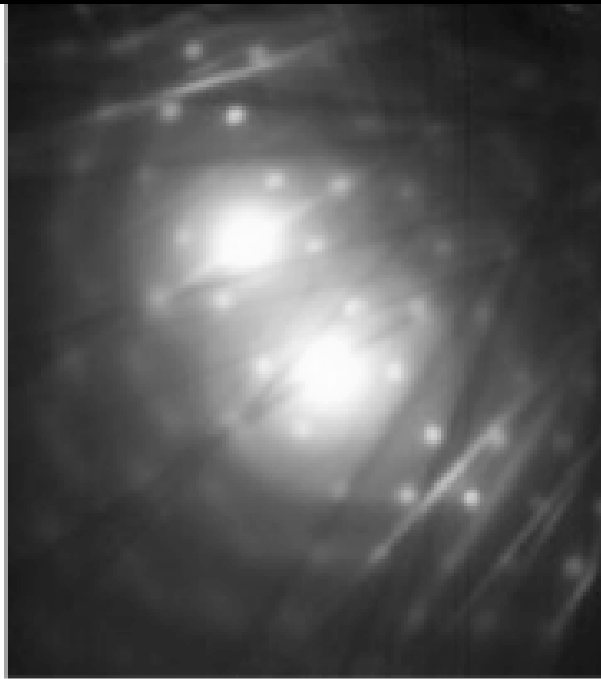
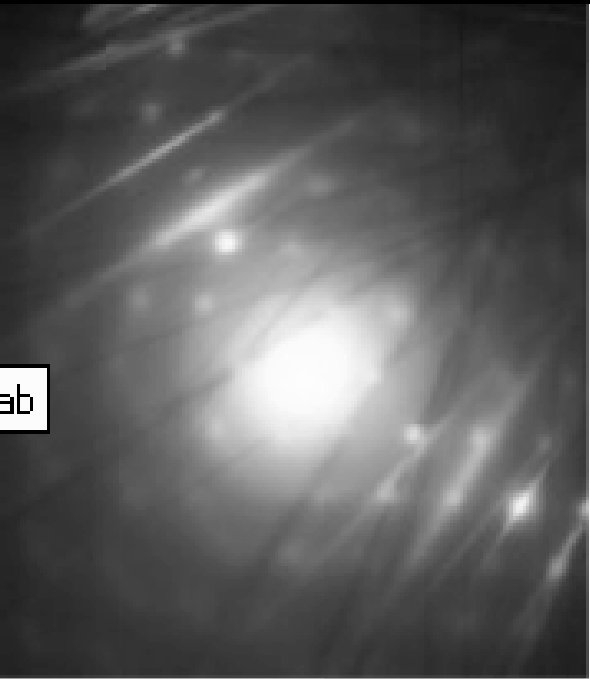


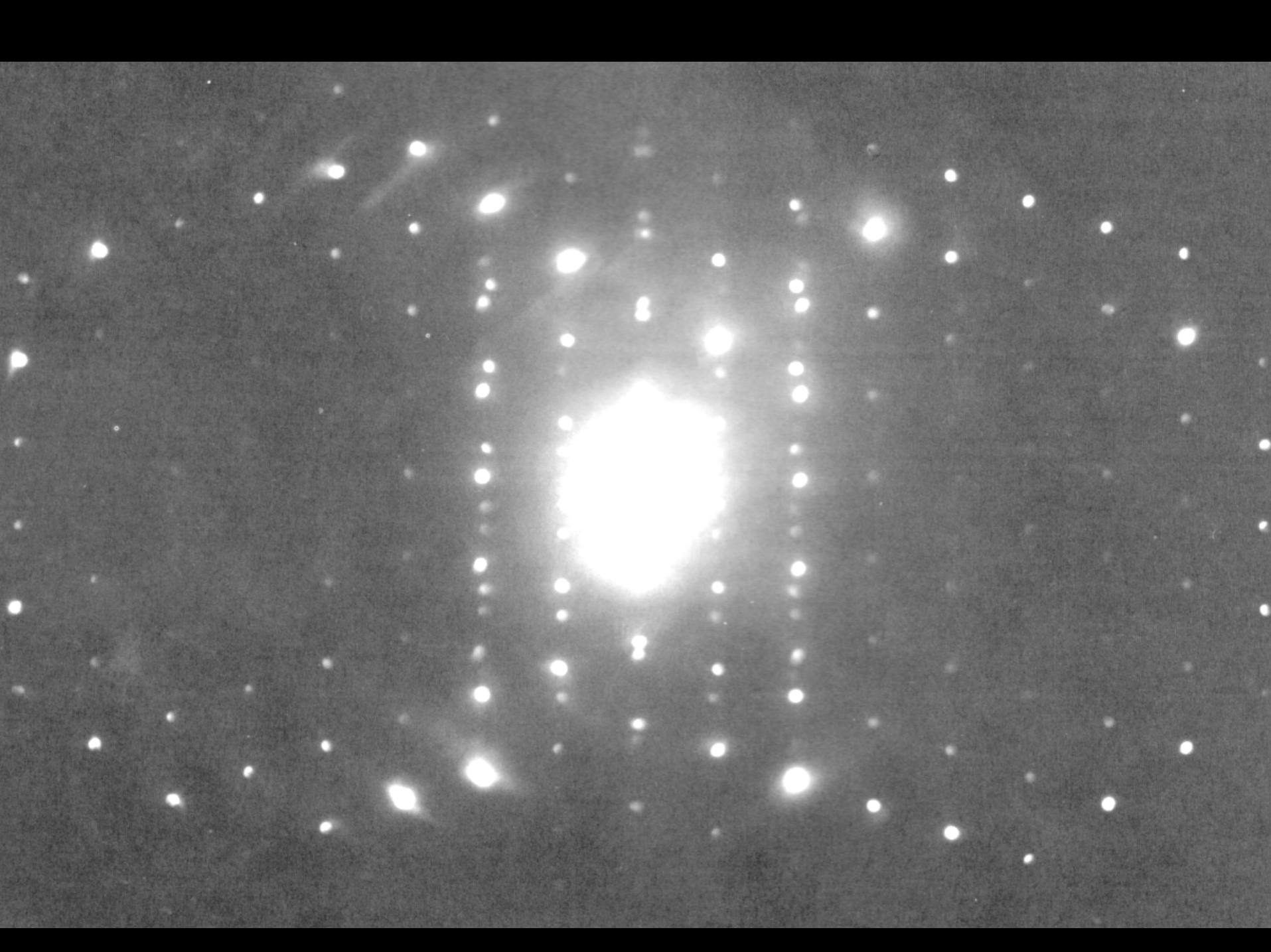


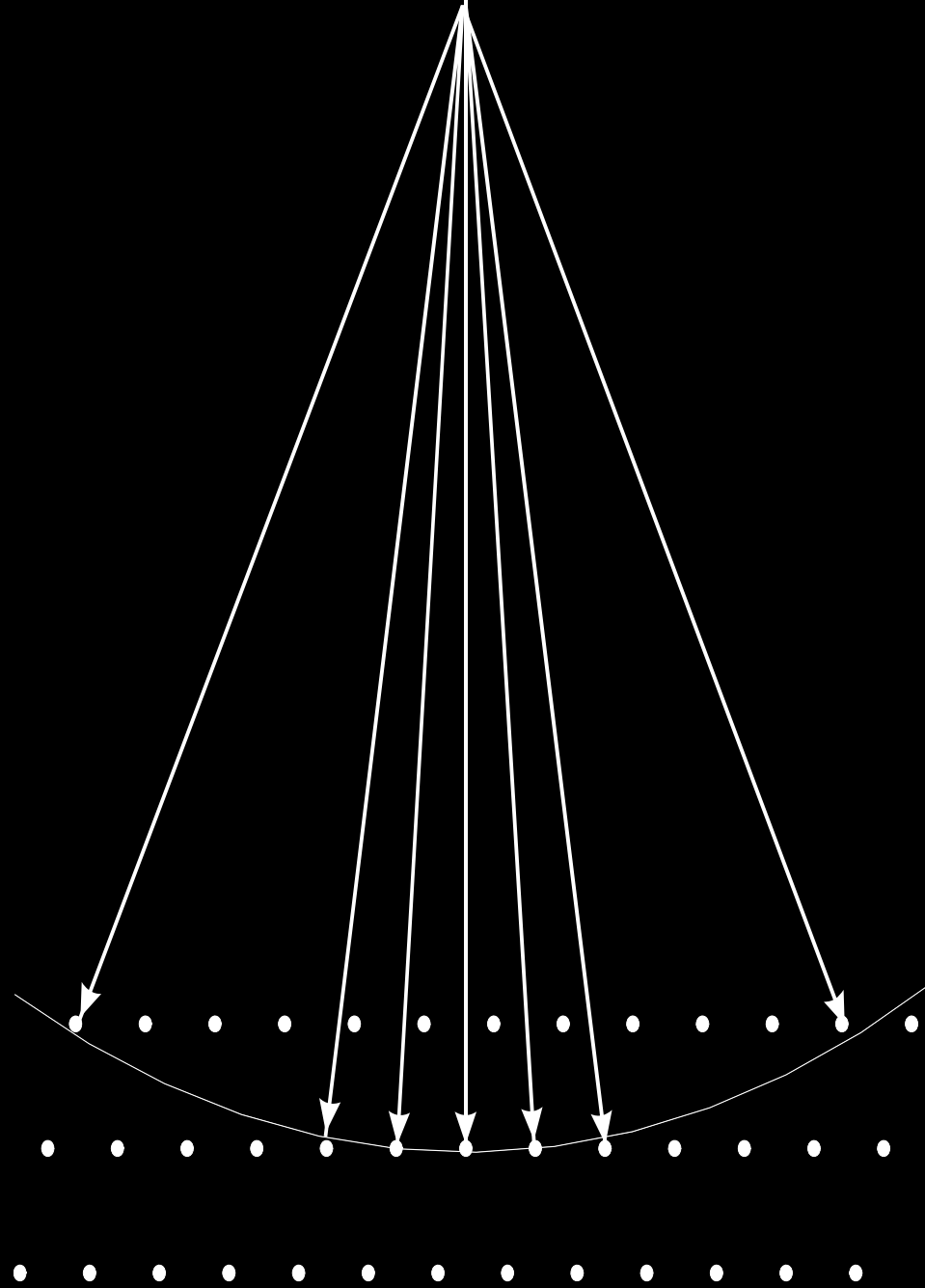




ab





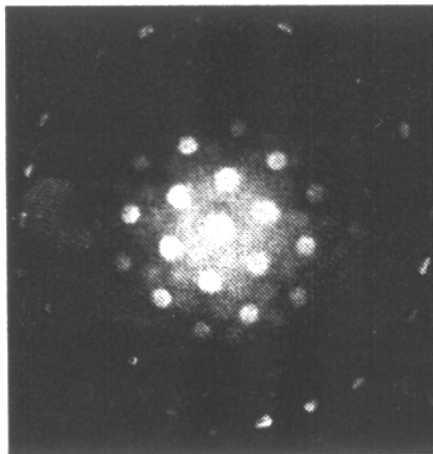
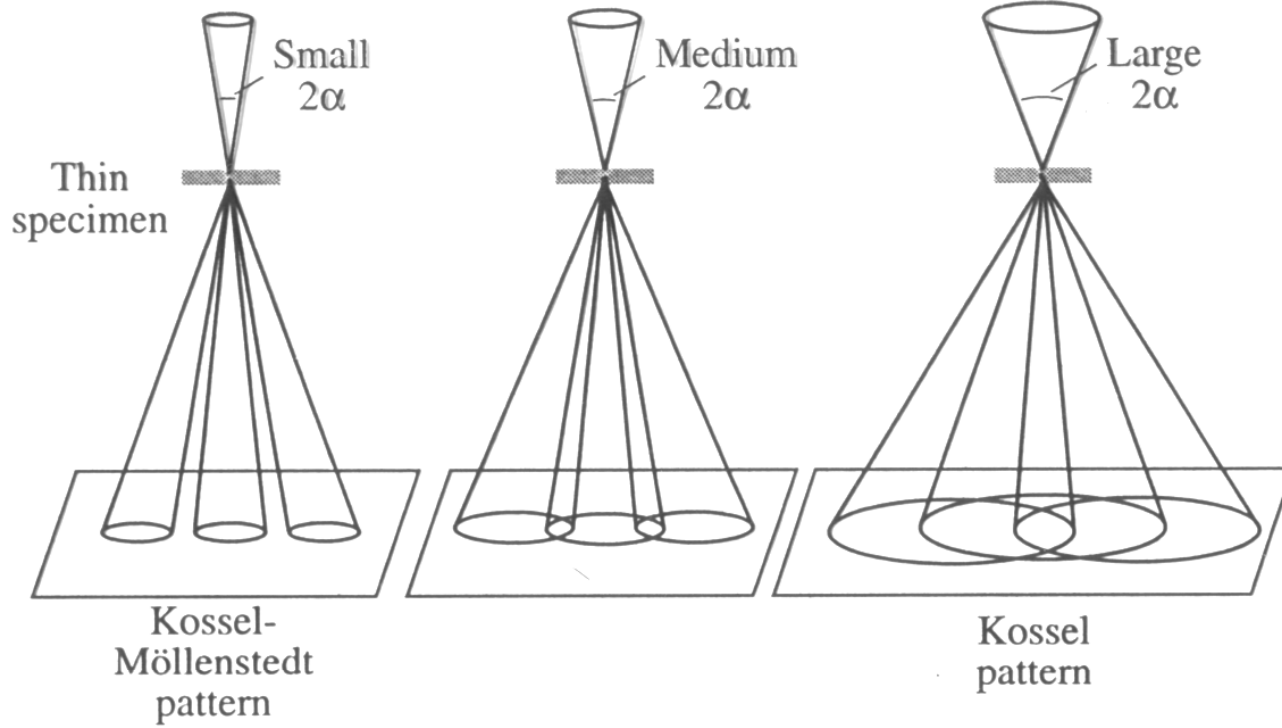




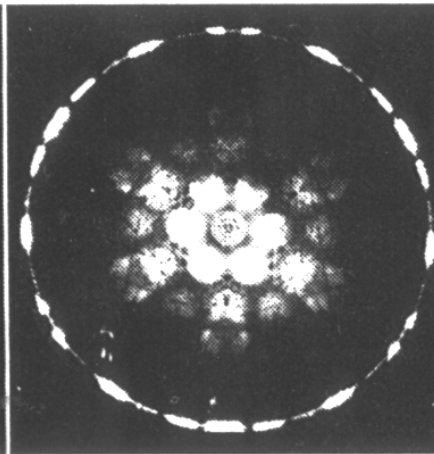
hh0

This is a black and white X-ray diffraction pattern showing a series of curved diffraction lines. The pattern is centered around a dark spot. Two white arrows point to specific features: one labeled 'hh0' pointing to a curved line, and another labeled '00l' pointing to a straight line. The diffraction lines are arranged in a roughly circular pattern, with some lines being more prominent than others. The overall appearance is that of a powder or single-crystal diffraction pattern.

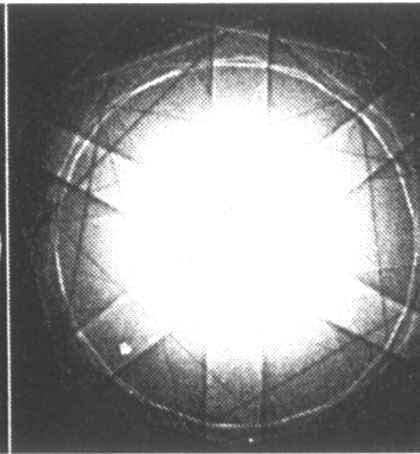
00l



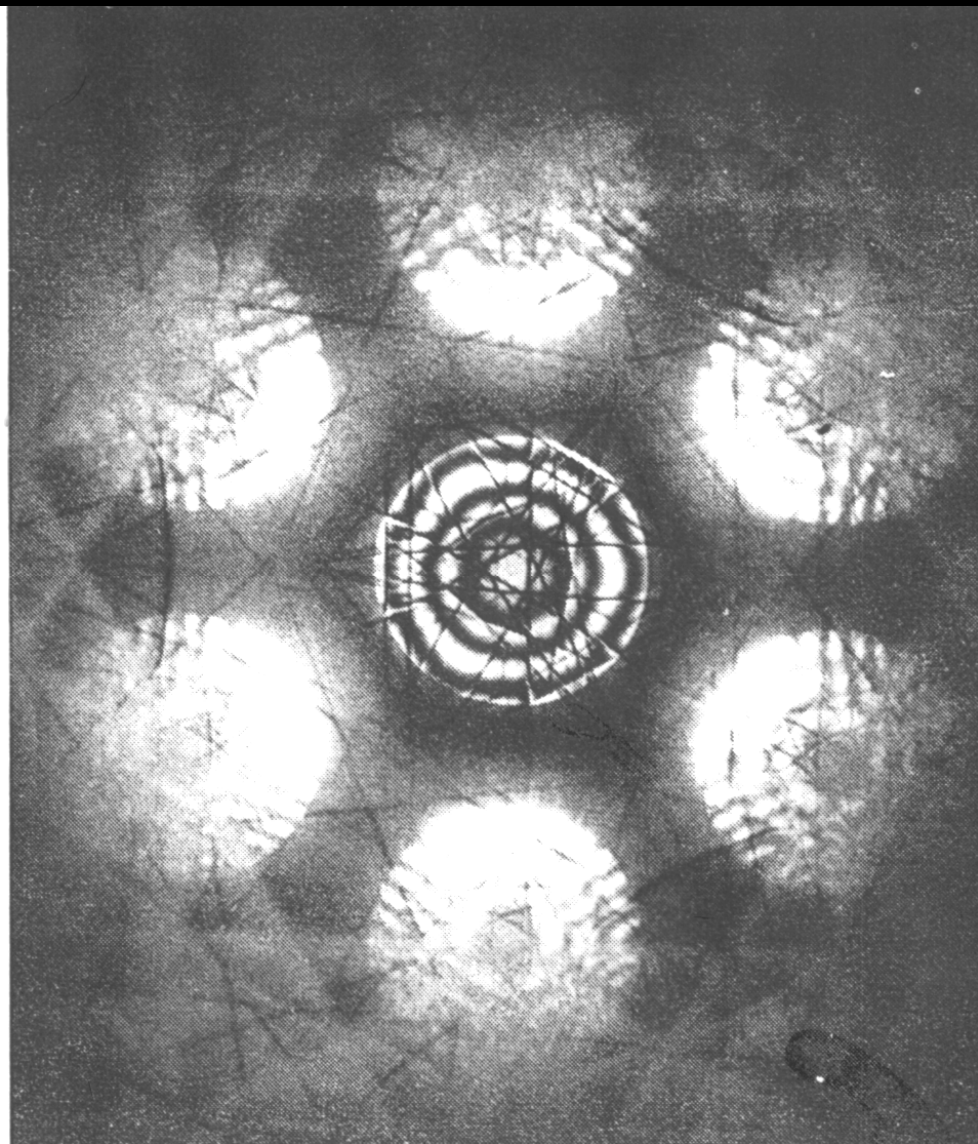
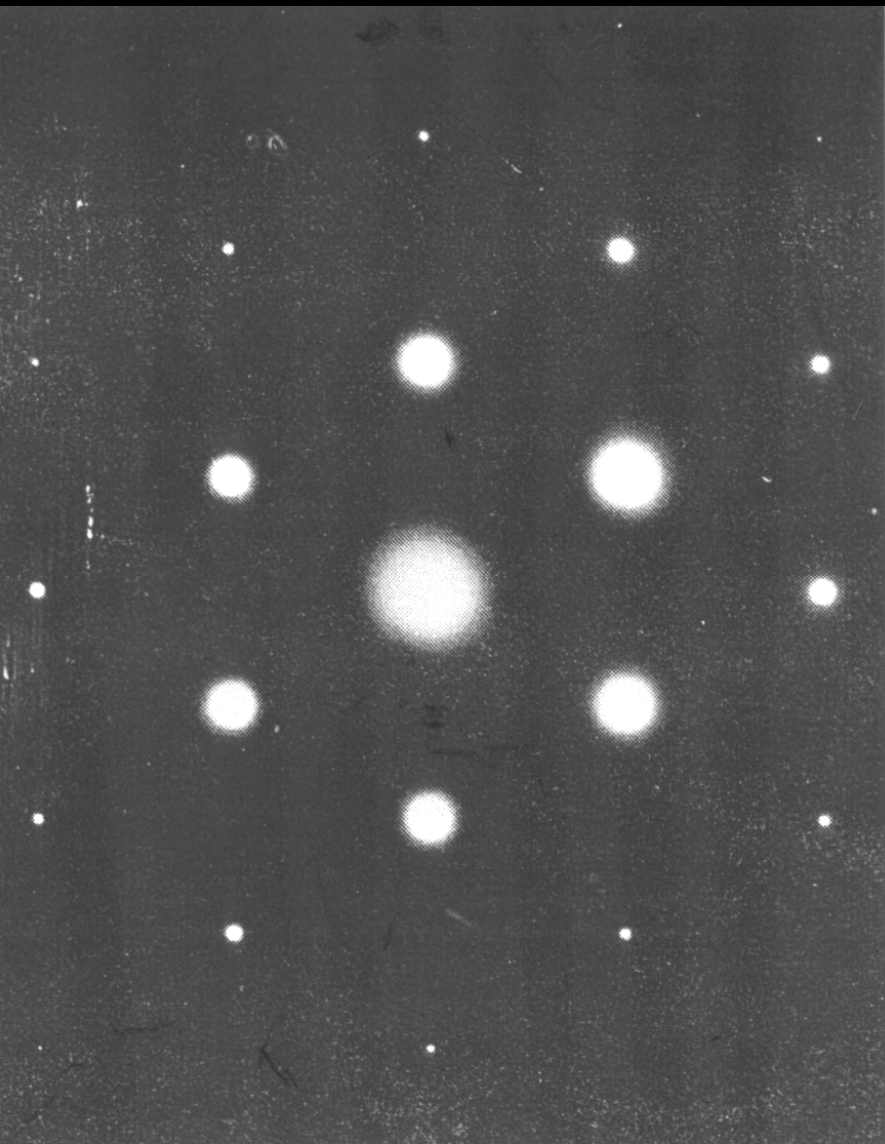
D

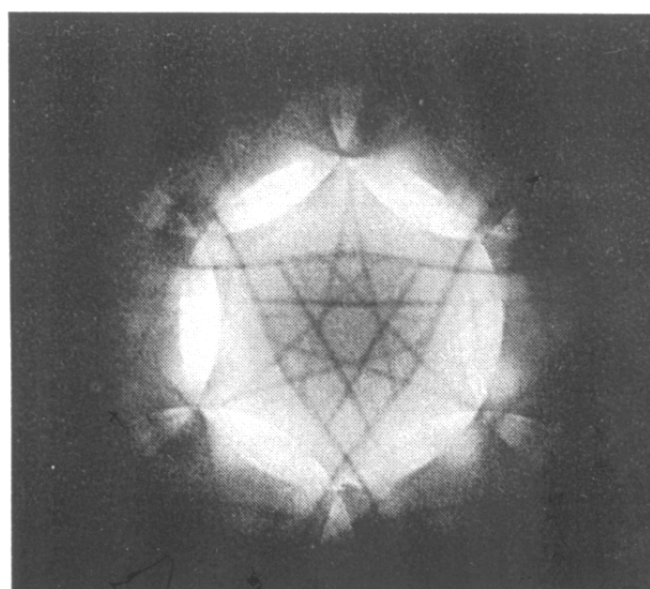
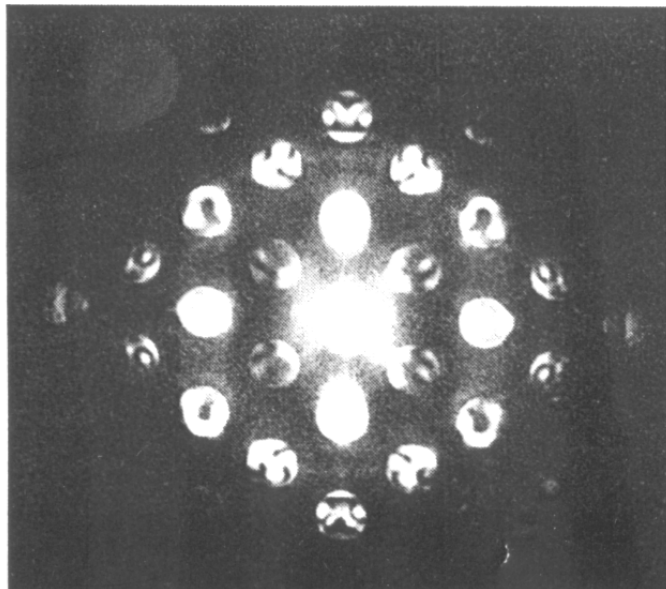
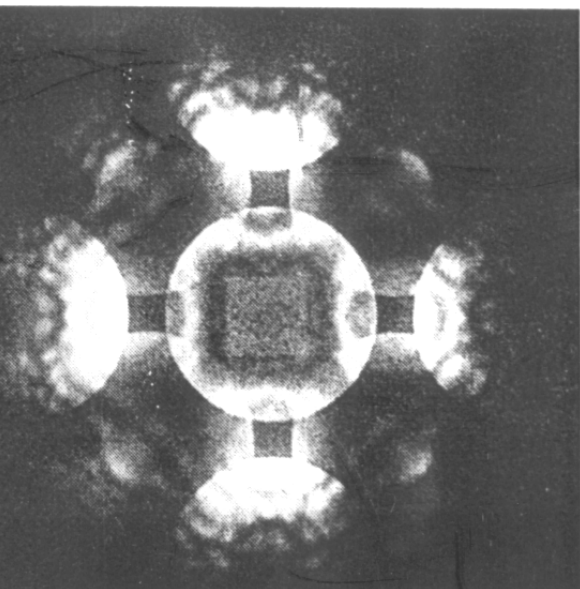
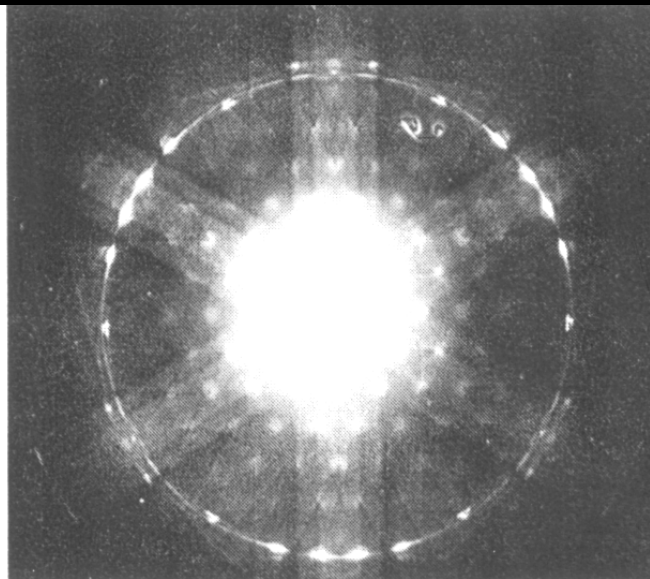
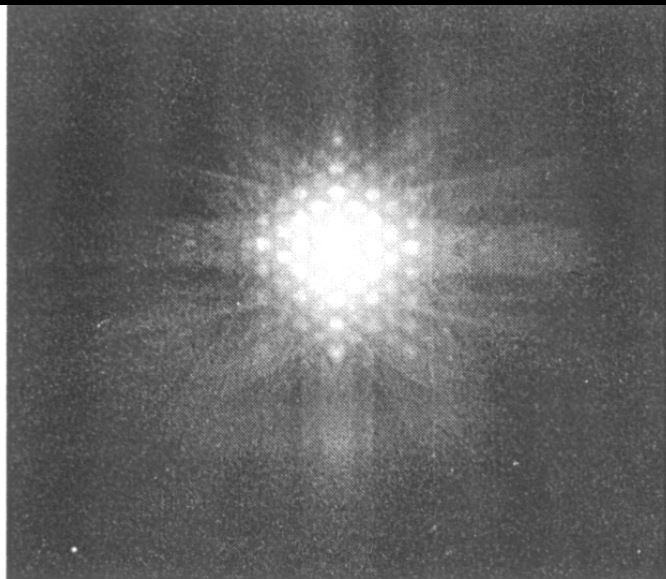
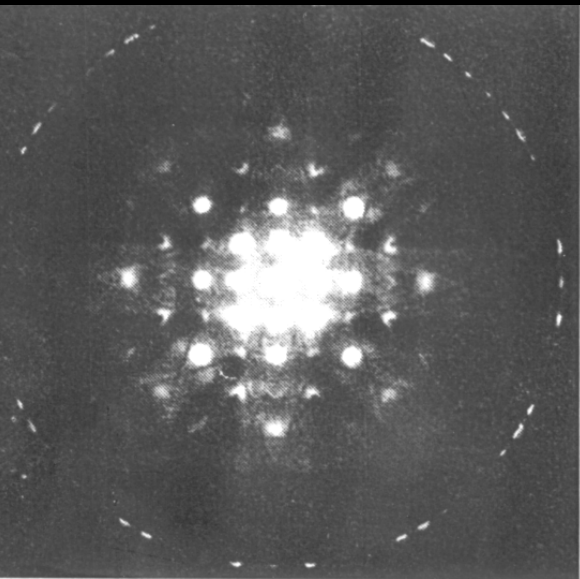


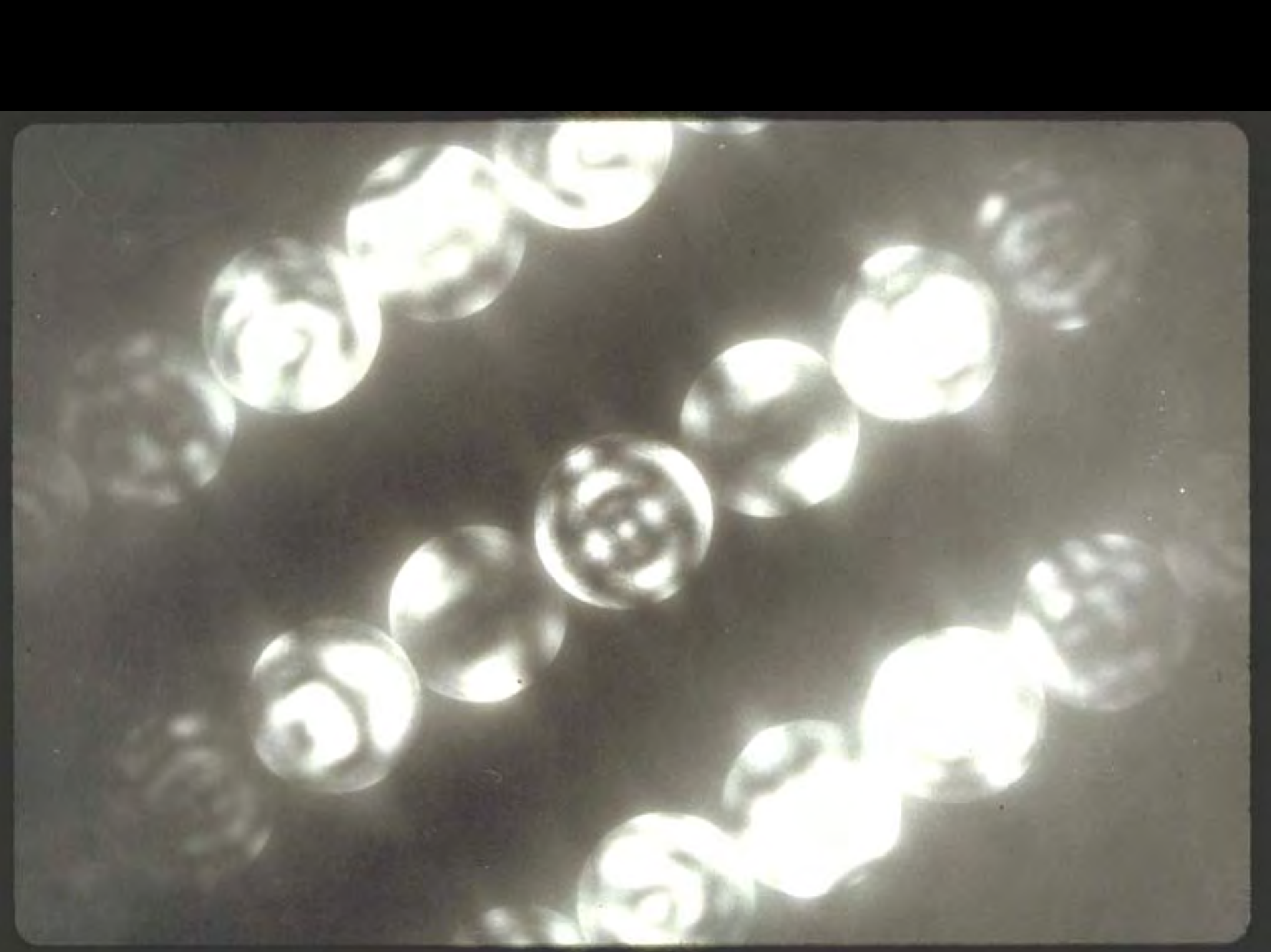
E

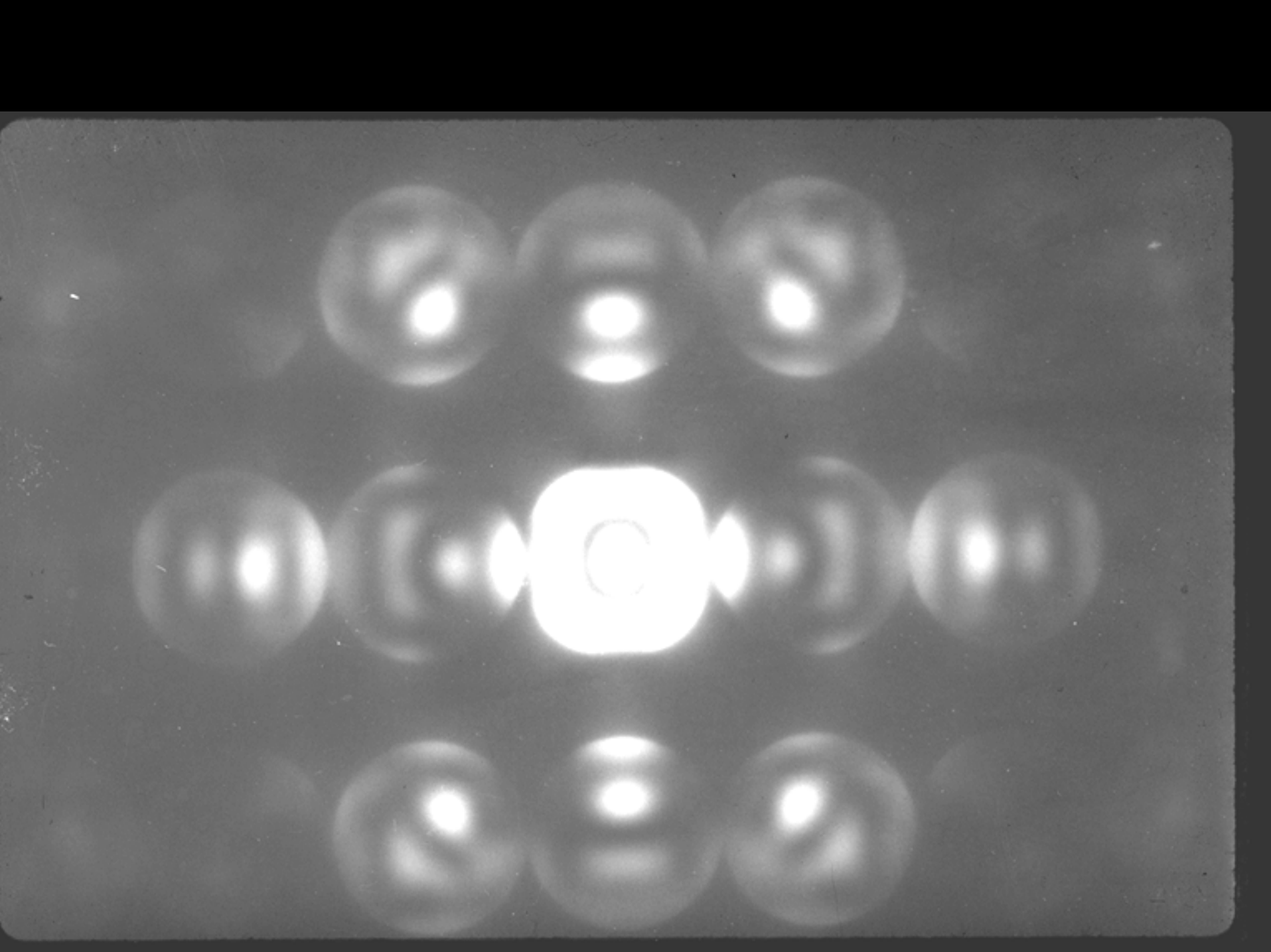


F



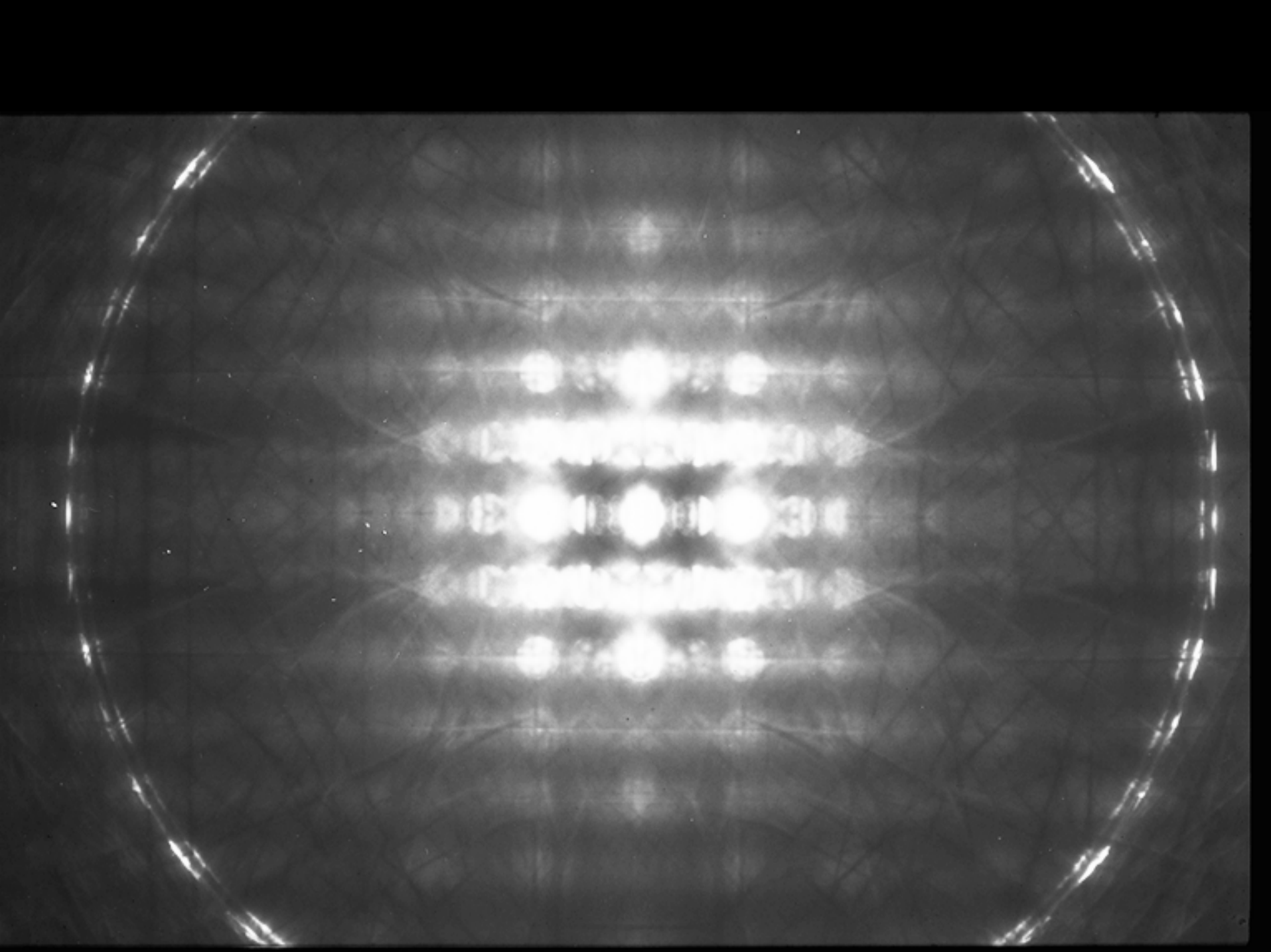


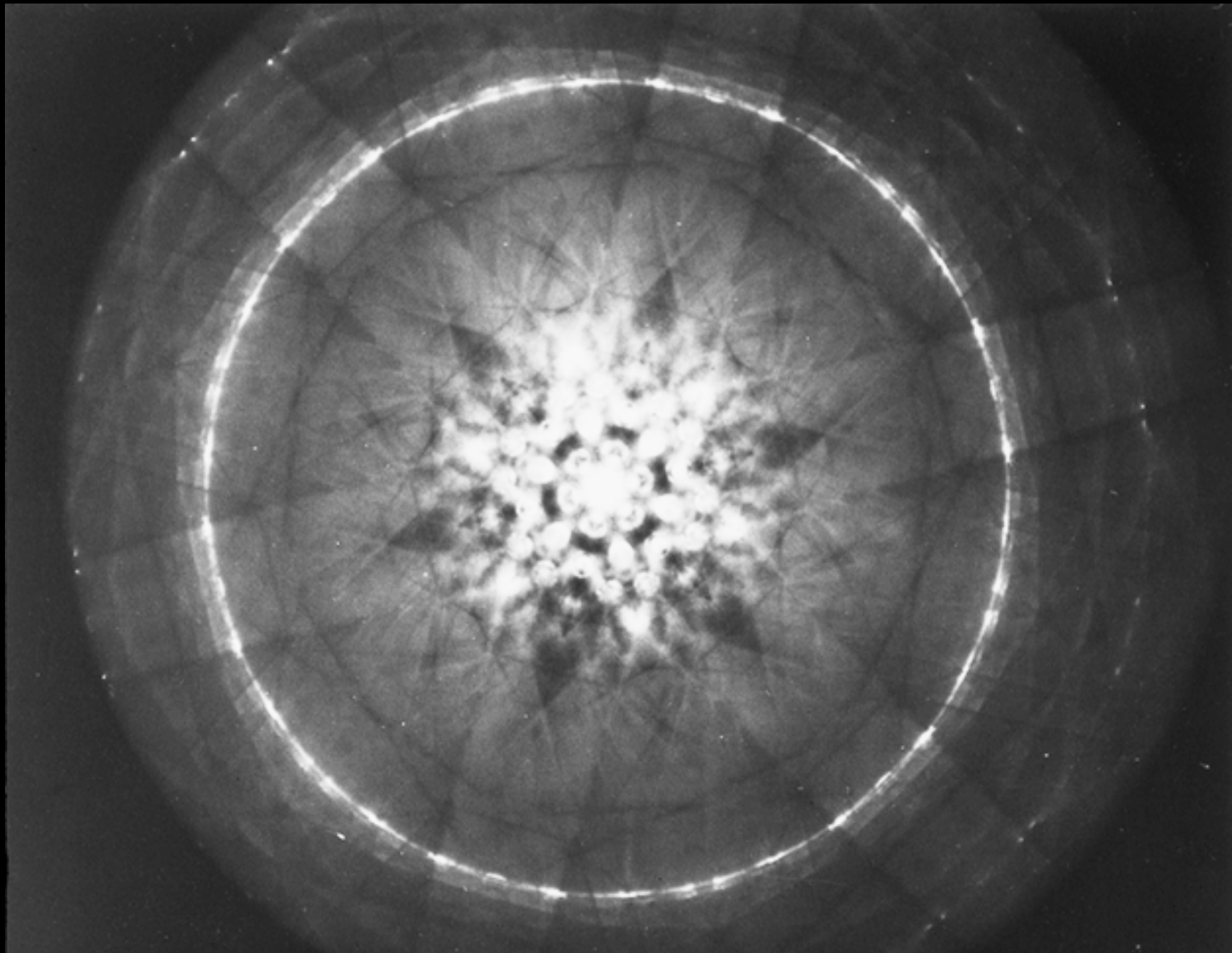








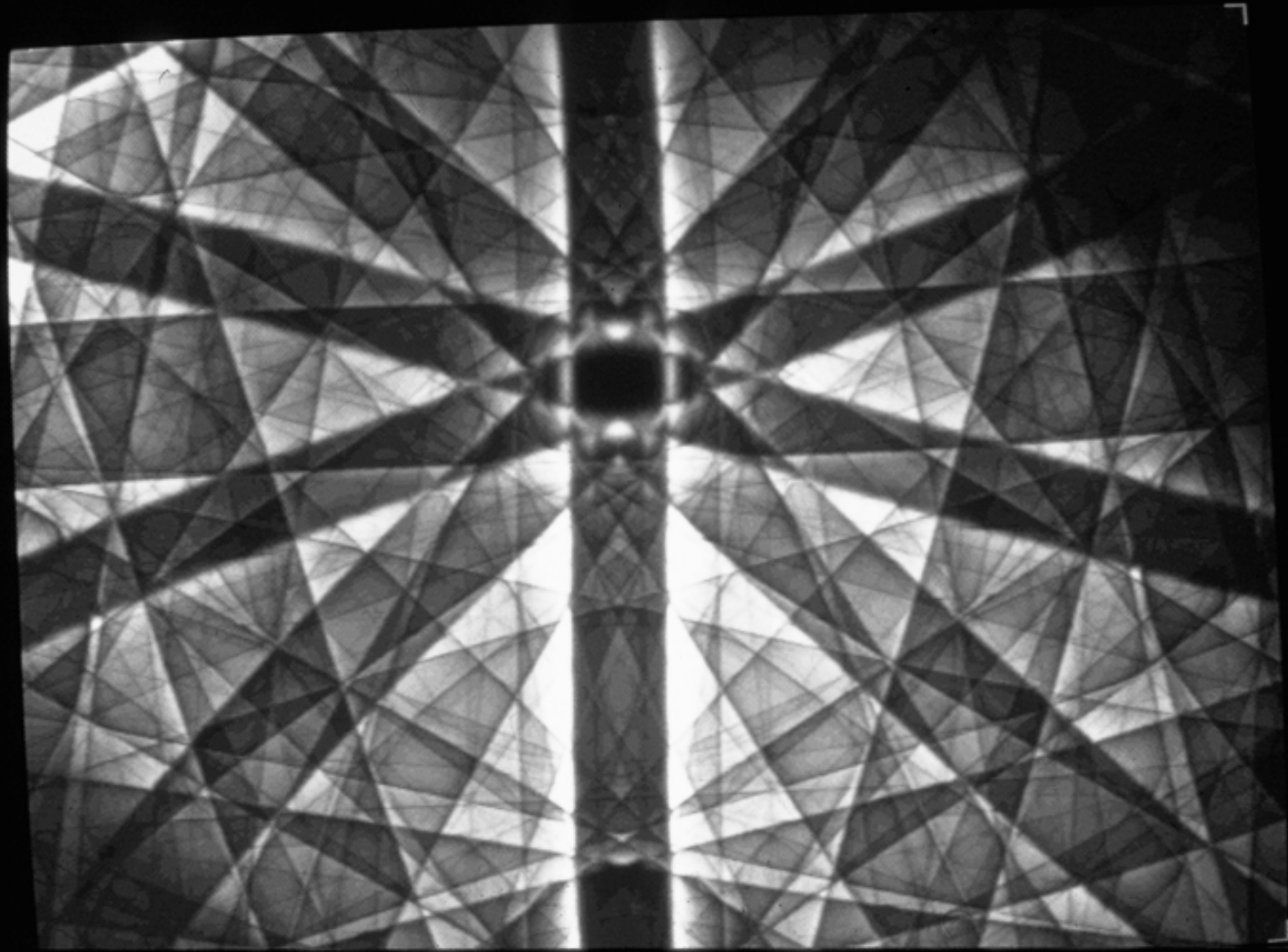




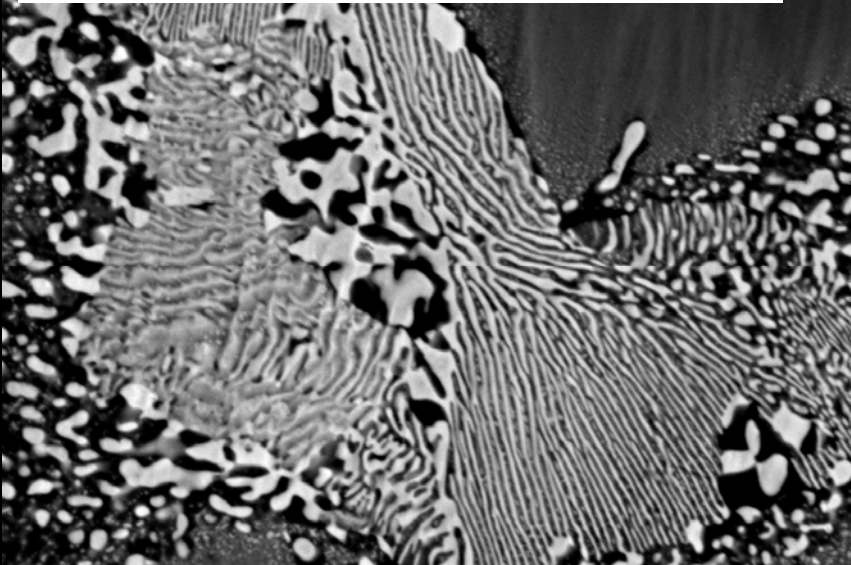
$10\bar{9}0$ \rightarrow



This image shows a high-resolution electron diffraction pattern, likely from a single crystal. The pattern is centered around a bright spot, with a grid of smaller spots extending outwards. The spots are arranged in a regular, repeating pattern, characteristic of a crystalline lattice. The central spot is the most intense, and the intensity of the surrounding spots decreases as they move further from the center. The overall appearance is that of a complex, multi-layered structure, possibly a layered material or a complex molecule. The pattern is captured in grayscale, with the spots appearing as bright white or light gray against a darker background.

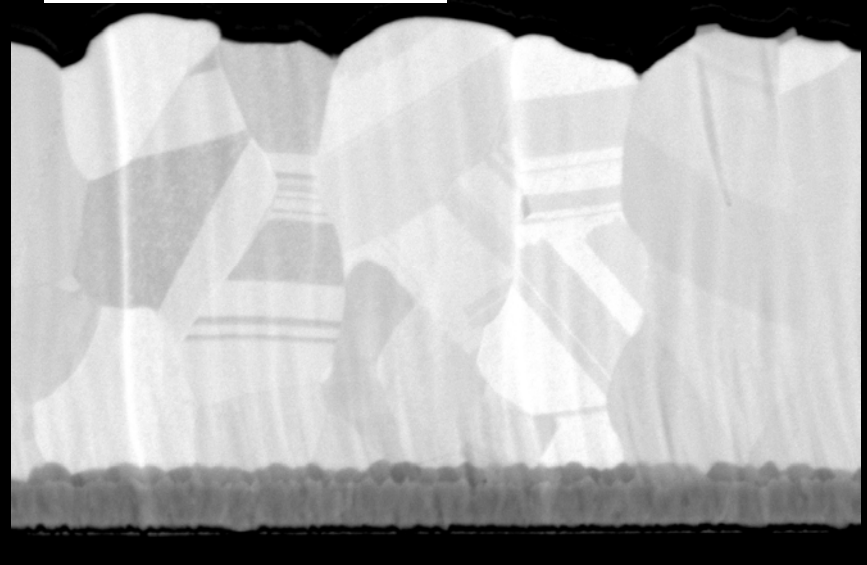


Al-Zn eutectic in galvanized coating



JEOL 7000F COMPO 5.0kV X18,000 WD 9.2mm 1μm

Thin film on glass



JEOL 7000F COMPO 5.0kV X20,000 WD 10.1mm 1μm

Pb-free solder grain structure



JEOL 7000F COMPO 7.0kV X4,500 WD 9.9mm 1μm